

Barco portacontenedores

Tipo post-panamax

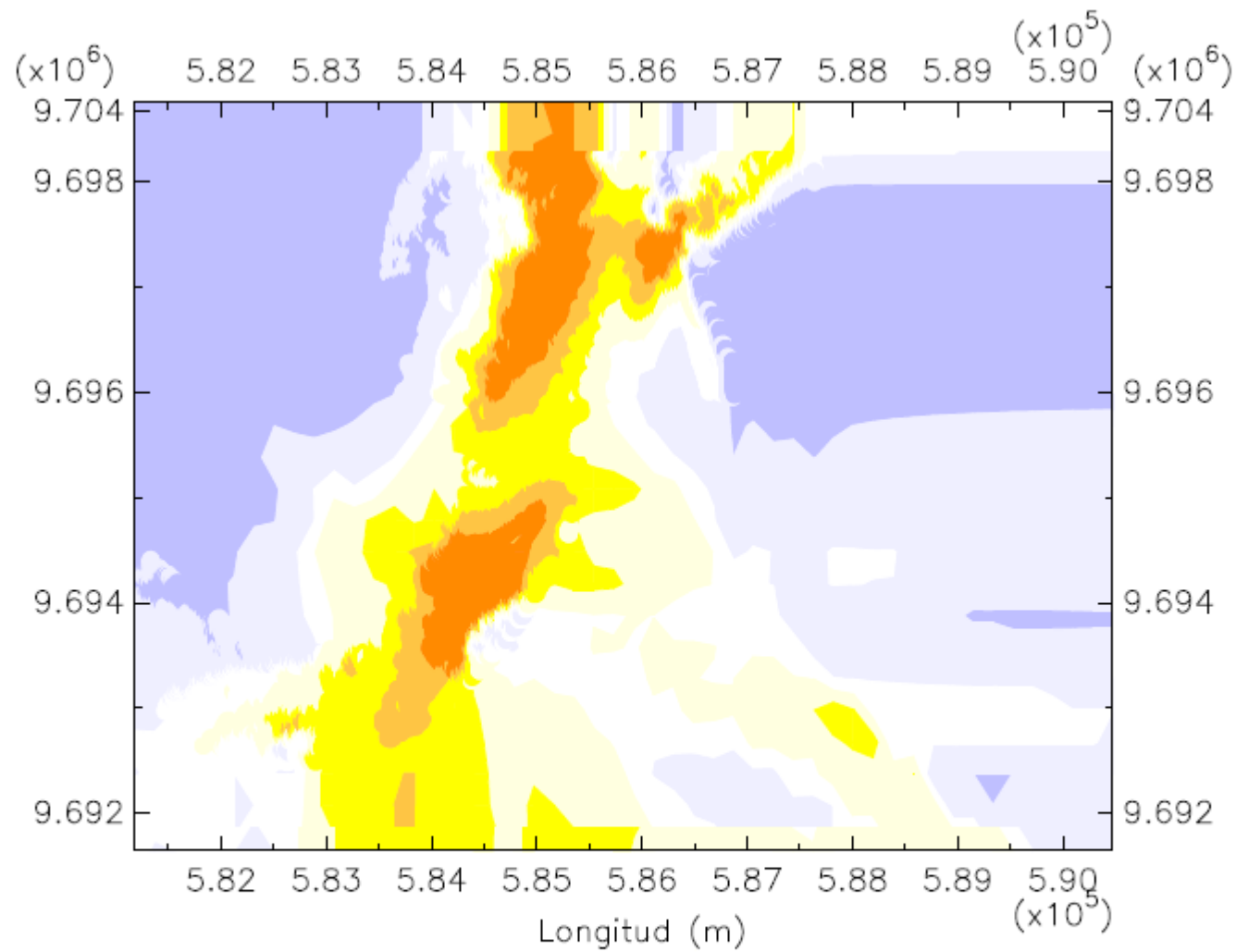
Eslora: 318.20 m

Manga: 42.800 m

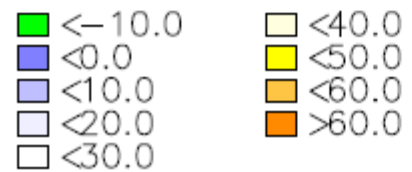
Calado: 11.60 m

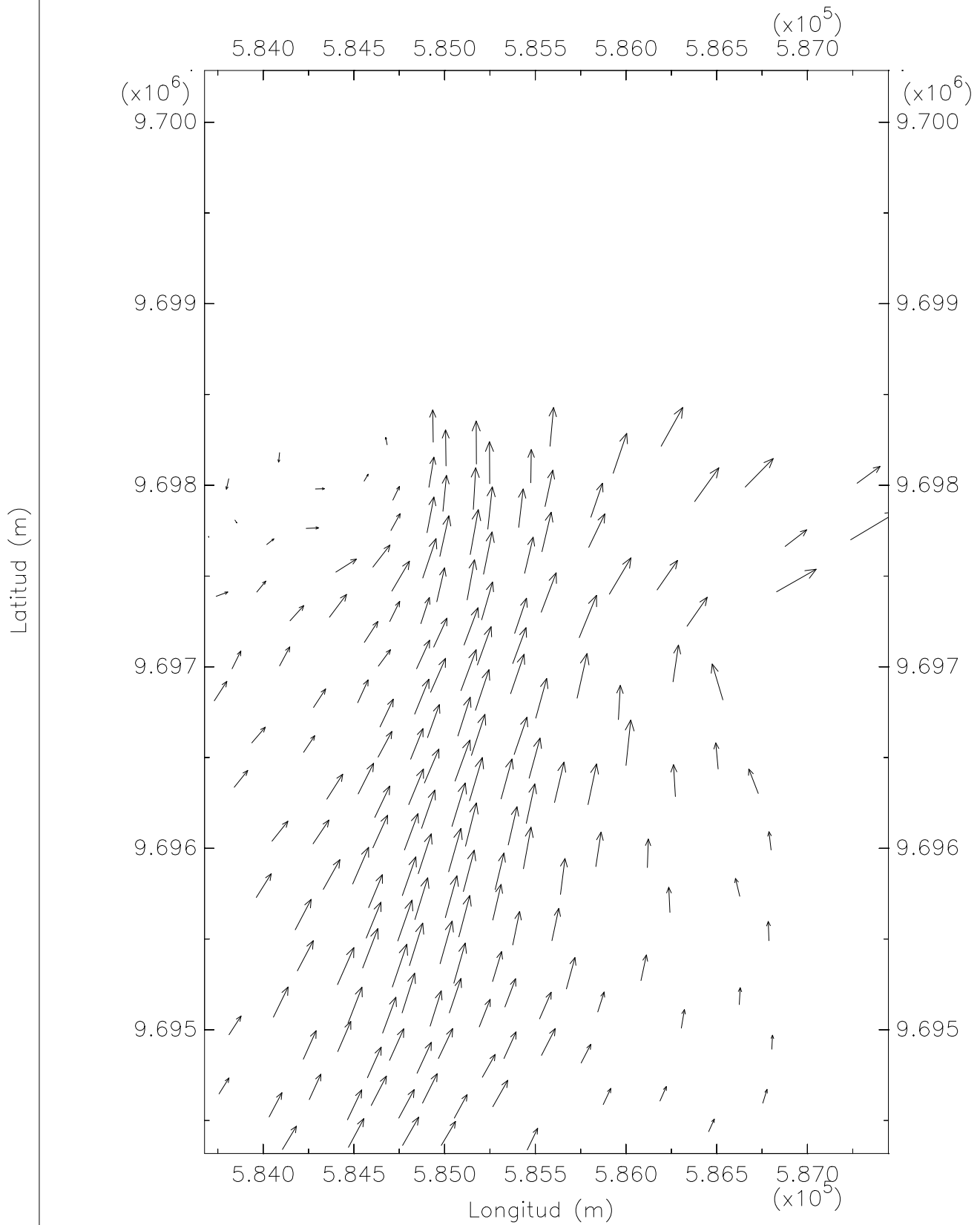
En la zona 1, tramo 3

Bajo condiciones de oleaje y llenante



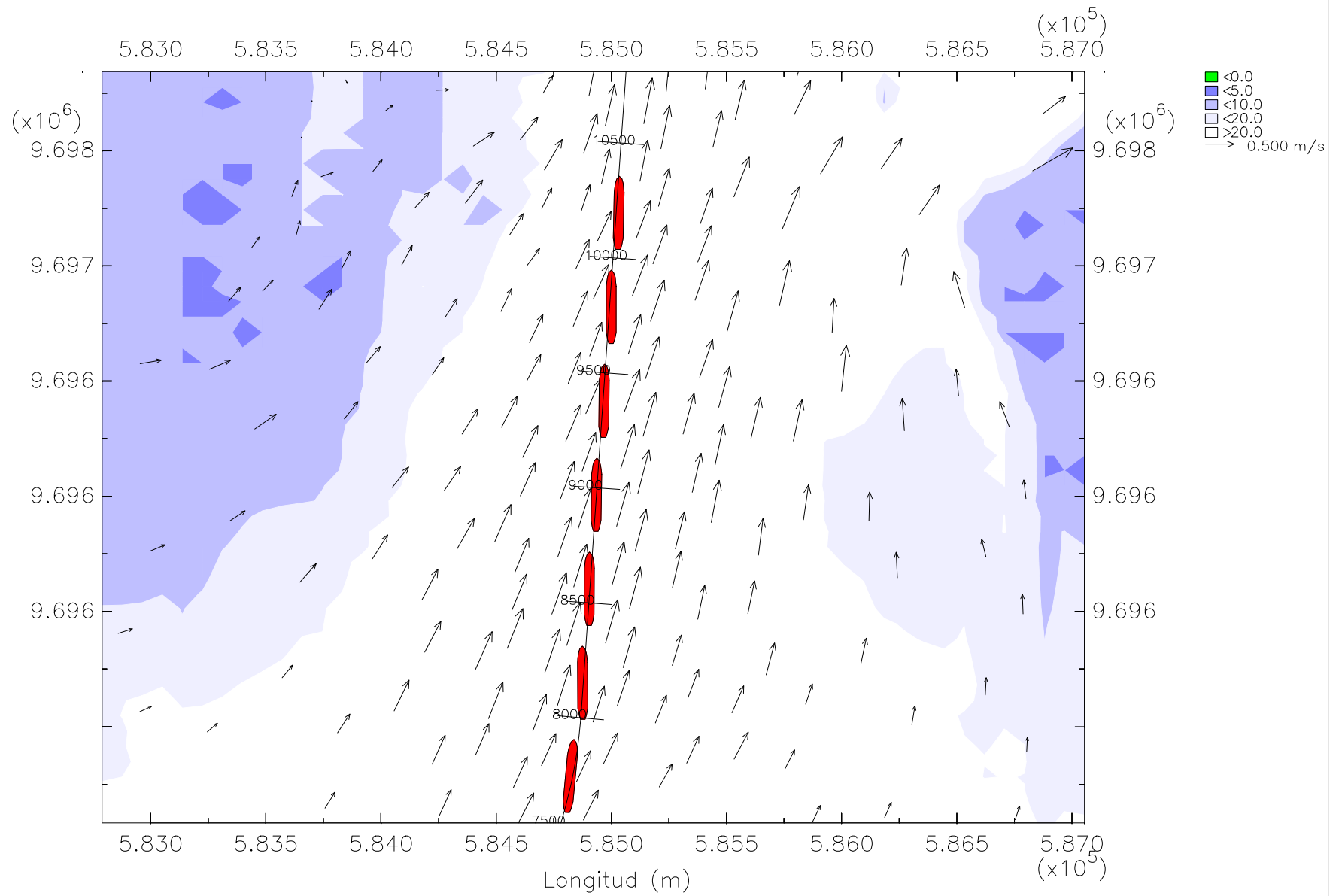
Zona 1 Tramo 3 Profundidad



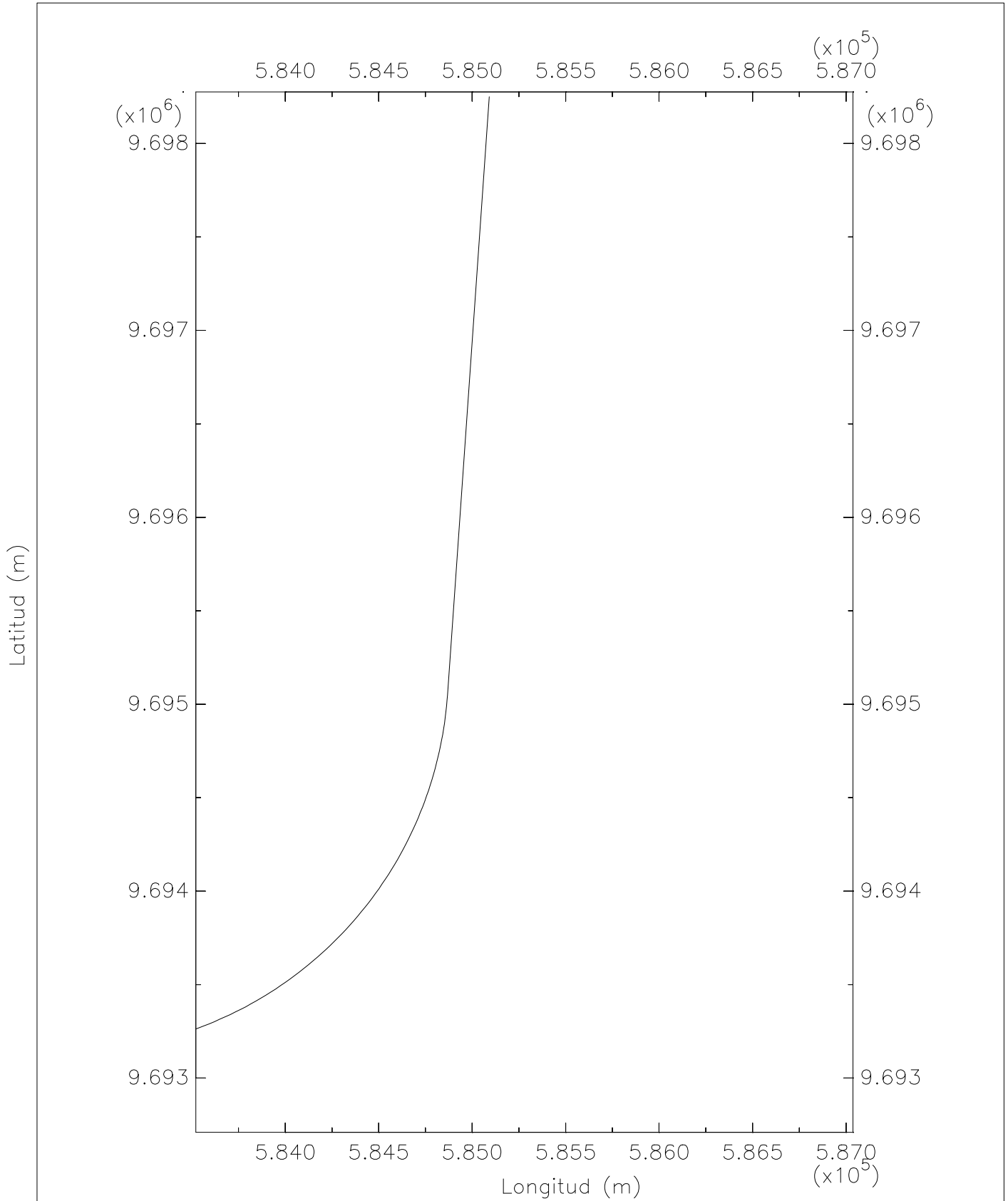


Zona 1 Tramo 2 Corriente

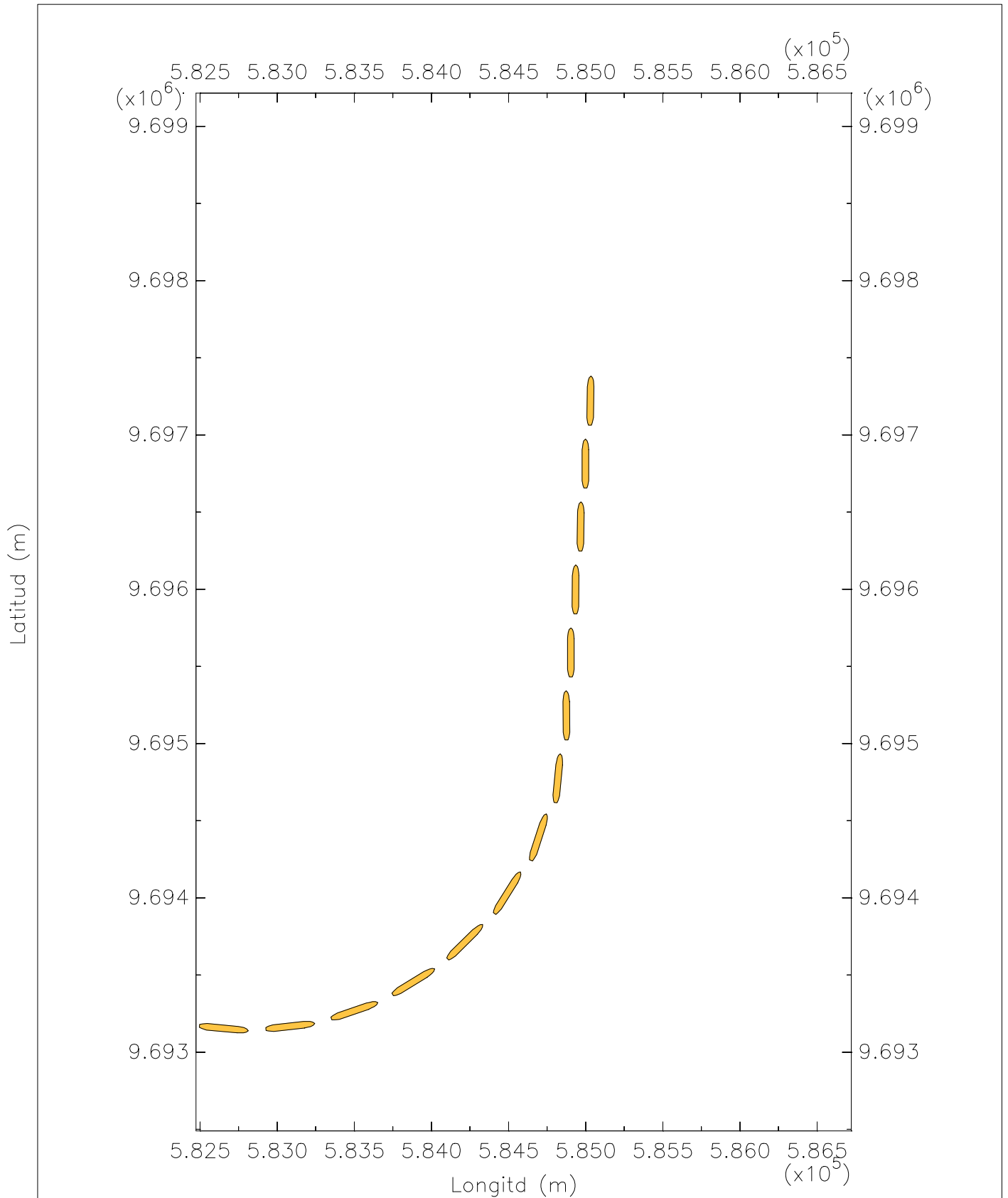
→ 0.500 m/s



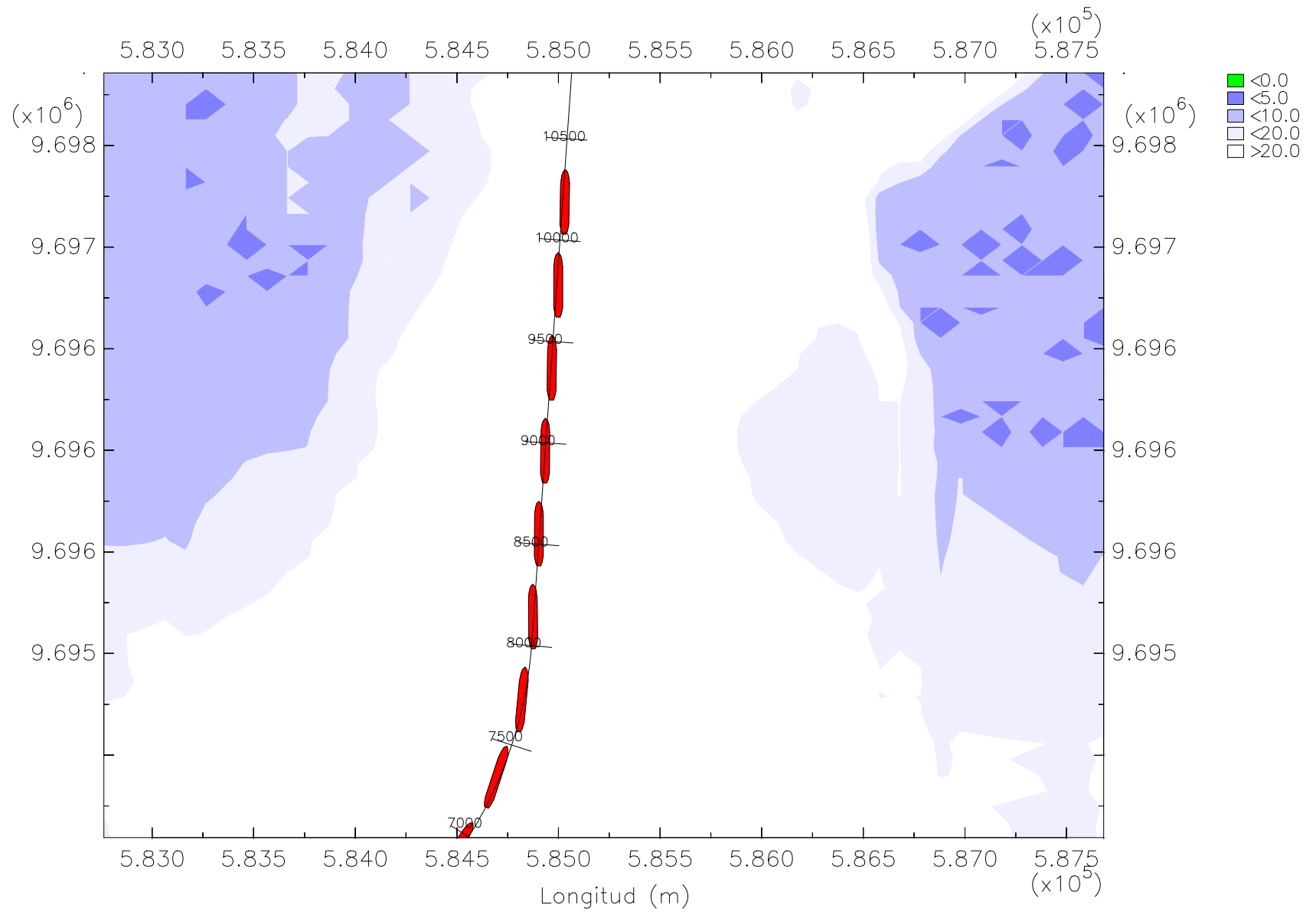
Z1FT1 Corriente y trayectoria del barco portacontenedores post-panamax



Zona 1 Tramo 3 Eje canal



Z1T3 Trayectoria del barco portacontenedores post-panamax en eflujo



Z1T3 Trayectoria del barco post-panamax en flujo

